



EyeMag Medical Loupes from ZEISS

Seeing is believing



Treating with flexibility.

ZEISS EyeMag Medical Loupes



// RESPONSIBILITY
MADE BY ZEISS

ZEISS EyeMag Medical Loupes

Precision at first sight

Medicine today requires meticulous attention to detail. Seeing tiny anatomical structures is not possible without correct magnification and high-quality optics. Clarity and precision enable successful treatments and optimal quality care.

EyeMag® medical loupes from ZEISS offer premium optical performance for first-time and experienced users. Equipped with LED illumination, the visualization tools provide great image clarity and depth of field over the entire treatment area. Easy to use and comfortable to wear, ZEISS EyeMag medical loupes combine elegance with functional design in a wide range of working distances and magnification levels.



ZEISS EyeMag Smart

- With 2.5x magnification, ideal for applications that require a large field of view and excellent depth of field
- Available with titanium eyeglass frame or fashionable sports frame



ZEISS EyeMag Pro F and ZEISS EyeMag Pro S

- Edge-to-edge sharpness with up to 5x magnification, ideal for users with high magnification needs
- Available with titanium eyeglass frame or comfortable headband



EyeMag Light II

- Combined with high-quality ZEISS optics, the powerful EyeMag Light II* provides crisp detail recognition and an unaltered view of tiny structures
- Perfect fit for all ZEISS EyeMag medical loupes

*A SCHOTT AG product

ZEISS EyeMag Smart

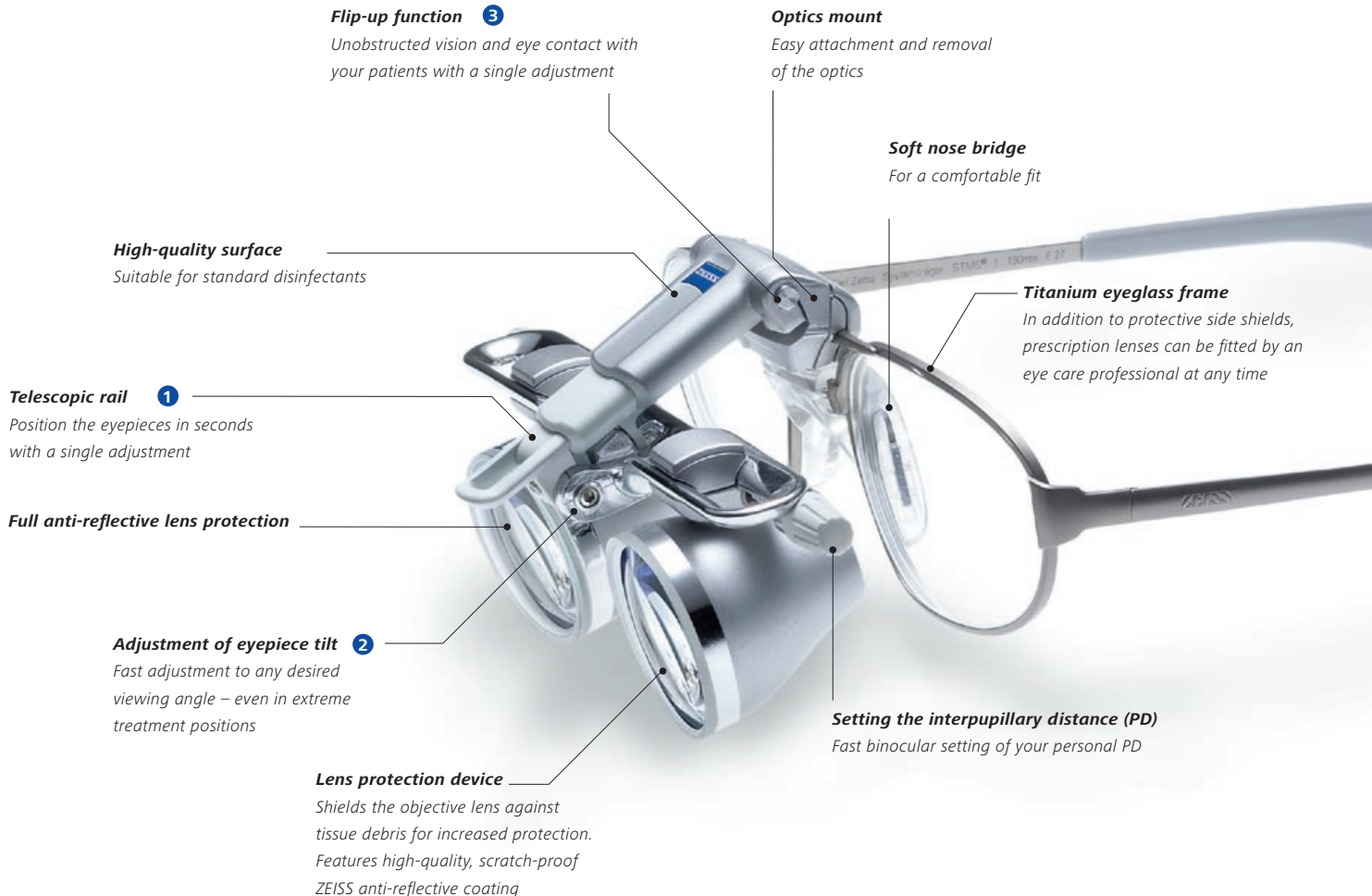
See the whole picture with stunning detail

With 2.5x magnification, ZEISS EyeMag Smart medical loupes provide images with impressive color rendition of anatomical structures. The large field of view and striking depth of field allow easy visualization of the entire treatment area. When magnification is not needed, the loupe can simply be flipped up, offering the wearer an unobstructed view.

Available in an elegant, lightweight titanium or sports frame, ZEISS EyeMag Smart medical loupes feature a range of settings for flexible tilt and angle views and a comfortable, ergonomic fit. Quick and easy to adjust, the medical loupe settings remain stable. The result: the ZEISS EyeMag Smart is a good choice for users requiring a compact and easy-to-operate medical loupe.

ZEISS EyeMag Smart

with titanium eyeglass frame



ZEISS EyeMag Smart

with sports frame



Style, function and comfort

ZEISS EyeMag Smart medical loupes are also available with a compact, lightweight and stylish sports frame, providing good wearing comfort during longer procedures. The curved lens design protects the wearer against splash and debris.

ZEISS EyeMag Smart

for laser therapies



Protection for laser procedures

Special ZEISS EyeMag Smart medical loupes for surgeons performing laser therapies offer high-quality laser protection* combined with advanced visualization. This model meets laser safety requirements of the European standard EN 207.

** A PROTECT-Laserschutz GmbH product*



Elastic headband

Ideal weight distribution provides a perfect fit



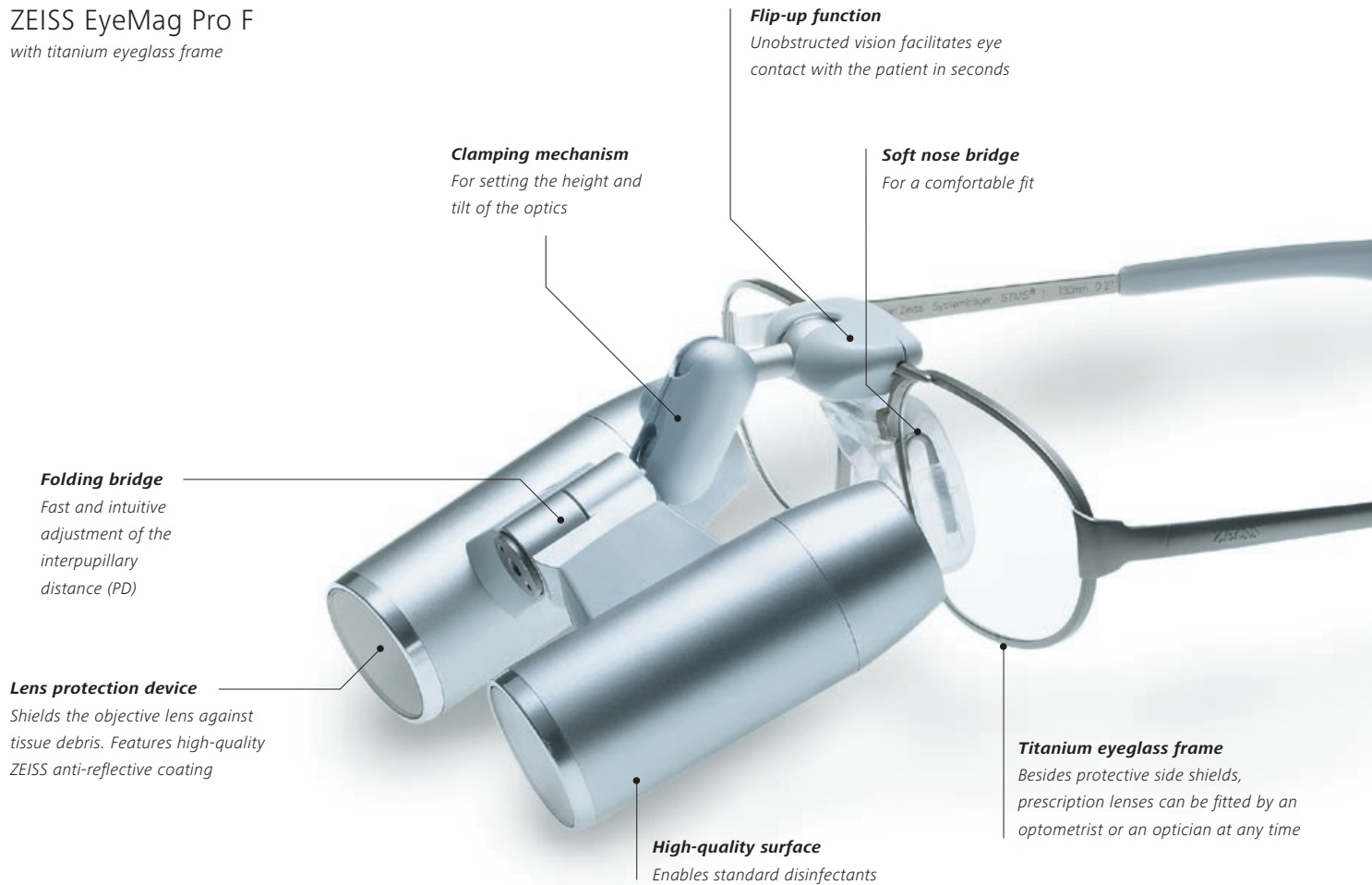
ZEISS EyeMag Pro

Advanced visualization for professional applications

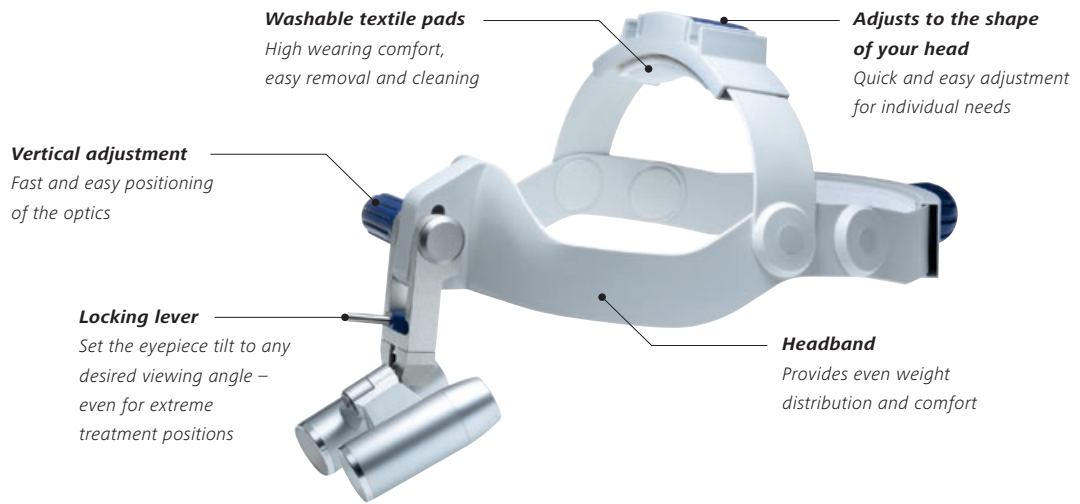
Experienced users with higher magnification needs will appreciate the advanced visualization capabilities of the ZEISS EyeMag Pro. Available in various magnification levels (3.2x–5x), ZEISS EyeMag Pro medical loupes provide high-contrast stereoscopic images with edge-to-edge sharpness for detail recognition and differentiation. When magnification is not needed, optics can simply be flipped up.

Mounted on either a lightweight titanium eyeglass frame (ZEISS EyeMag Pro F) or with a headband (ZEISS EyeMag Pro S), the medical loupes offer settings for a wide range of tilt and angle views while supporting a comfortable, ergonomic working position. Settings are quick and easy to adjust and remain stable at all times.

ZEISS EyeMag Pro F with titanium eyeglass frame



ZEISS EyeMag Pro S with headband

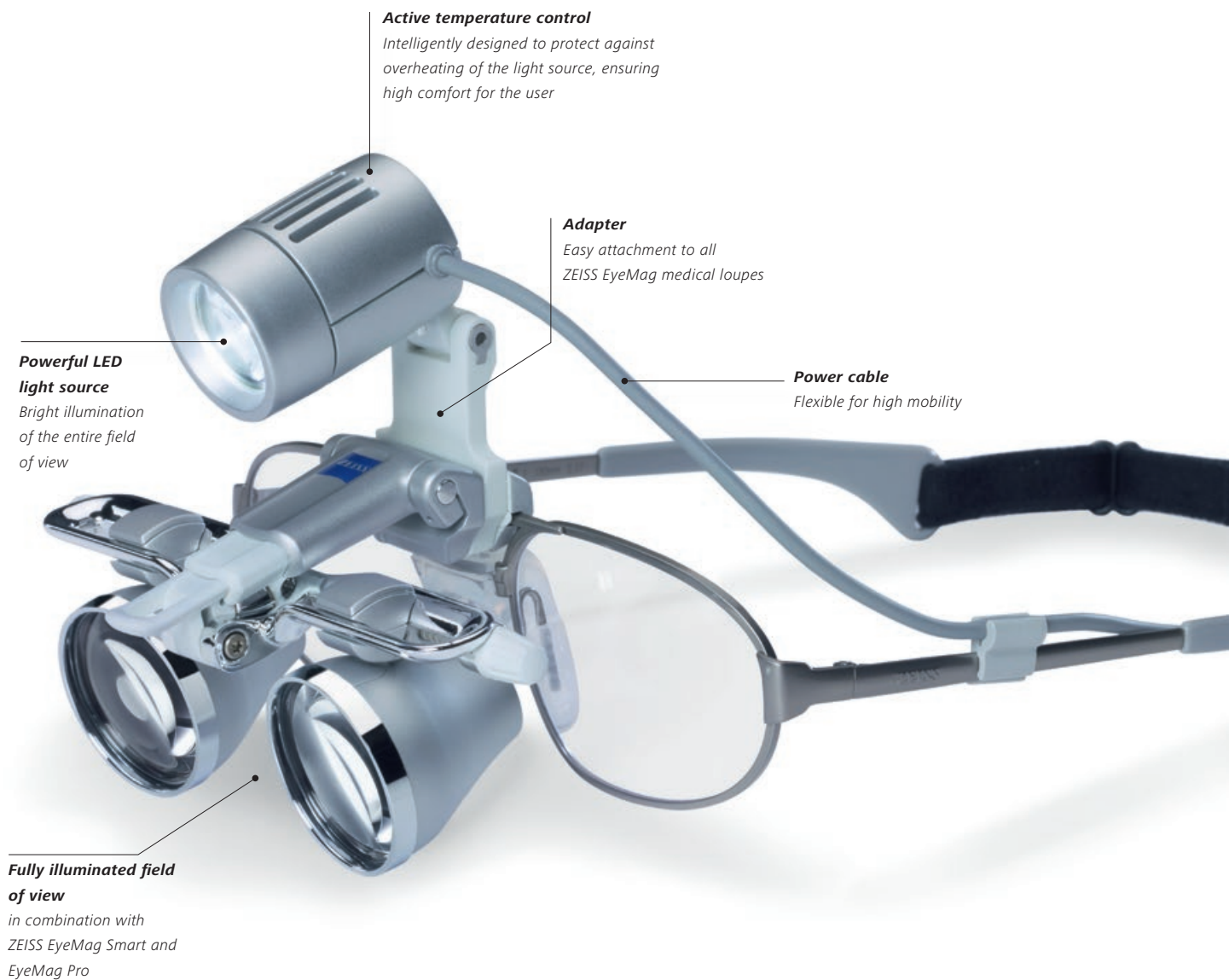


EyeMag Light II

Lighting the way

The powerful lighting of the EyeMag Light II maximizes illumination intensity for high detail recognition. Combined with high-quality ZEISS optics, the LED illumination provides a clear, sharp view of tiny details and structures thanks to its close resemblance to daylight and even distribution of light.

Two powerful rechargeable battery packs and a charging cradle are part of the standard package allowing practically interruption-free work – 24/7. The compact, portable, and ergonomic design optimizes comfort for daily use across a wide range of procedures.



Illumination as needed – flexible and mobile



In combination with ZEISS EyeMag Pro F and EyeMag Pro S medical loupes, EyeMag Light II offers almost coaxial light, resulting in minimal shadow formation.



Two rechargeable battery packs with a convenient charging cradle for practically interruption-free work.

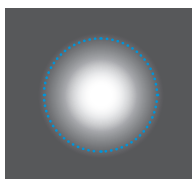


■ Battery uptime
■ Battery charge time

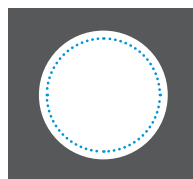
Single button
3-step intensity control

Charge level indicator

Practical belt clip
for freedom of movement



Conventional system



EyeMag Light II

Unlike illuminations with conventional lens configurations, EyeMag Light II with its clearly defined illuminated field offers even and powerful illumination across the entire field of view of your ZEISS loupes.

..... Field of view

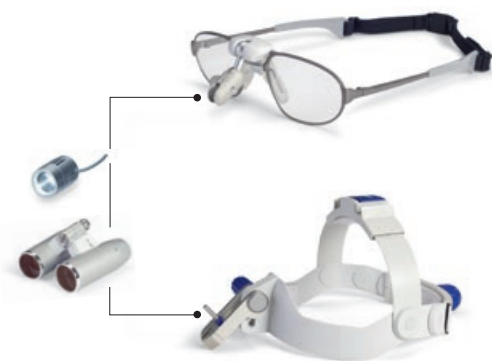
Personalized magnification and illumination

Select the ideal medical loupe design and configuration for you



ZEISS EyeMag Smart

- Flip-up medical loupes featuring a Galilean design
- 2.5x magnification provides large fields of view for comprehensive visualization of the surgical area
- Easy, intuitive operation – ready for use in seconds
- Comfortable, ergonomic fit
- Available with three different carriers:
 - ZEISS EyeMag Smart with titanium eyeglass frame,
 - ZEISS EyeMag Smart with sports frame and
 - ZEISS EyeMag Smart with laser protection
- Compatible with EyeMag Light II LED illumination



ZEISS EyeMag Pro F and ZEISS EyeMag Pro S

- Flip-up medical loupes featuring a Kepler design
- For users with high magnification demands
- Large selection of different models available in different combinations of magnification levels and working distances
- Available with two different carriers:
 - ZEISS EyeMag Pro F with titanium eyeglass frame and
 - ZEISS EyeMag Pro S with headband
- Compatible with EyeMag Light II LED illumination



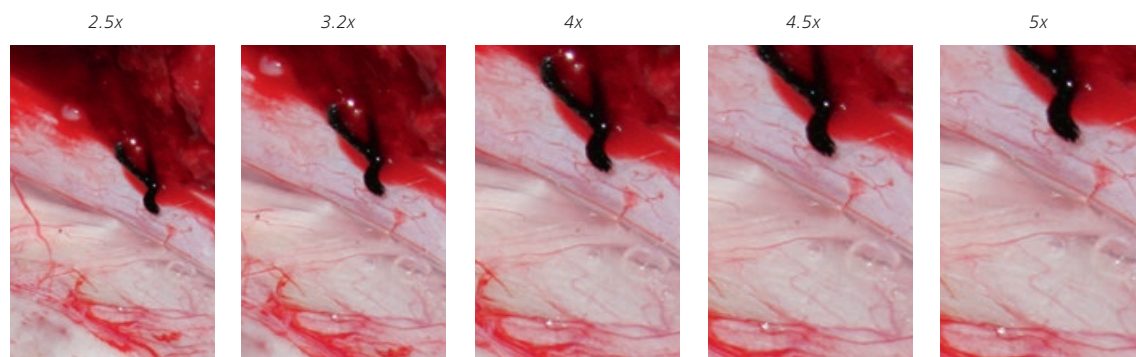
Measure your working distance

Measure the typical distance from your eyes to the object of interest to determine the preferred working distance.



Select the right combination

For the selected working distance, decide what combination of magnification and field of view will best suit your application. An overview of all fields of view and magnification levels is available on pages 12/13.



Application image courtesy of H.M. Mayer MD PhD, Munich, Germany



Optical properties

Fields of view (actual size)

The following fields of view are possible depending on the working distance and the desired magnification. These determine the selection of your individual medical loupes.



ZEISS EyeMag Smart

Optical properties

Working distance (mm)	300	350	400	450	550
Working distance (inches)	12	14	16	18	22
Magnification	2.5x	2.5x	2.5x	2.5x	2.5x
Field of view (mm)	67	77	86	96	115
	1	2	3	4	5

**Don't forget
the LED
illumination!**
– see pages 8/9



ZEISS EyeMag Pro F

Optical properties

Working distance (mm)	300		350		400		450		500	
Working distance (inches)	12		14		16		18		20	
Magnification	4x	5x	3.6x	4.5x	3.5x	4.3x	3.3x	4x	3.2x	4x
Field of view (mm)	56	44	71	56	86	68	100	81	115	93
	2	1	4	2	6	3	8	5	9	7

Technical data

EyeMag Medical Loupes from ZEISS

EyeMag Smart



Standard delivery package includes EyeMag Smart with titanium frame, sports frame and laser protection**

Optics	Featuring a Galilean design
Carriers	- Titanium eyeglass frame - Sizes: S, M, L with elastic headband and soft nose bridge - Sports frame with elastic headband and soft nosepiece - Sports frame featuring laser protection and eyepiece protection, with elastic headband and soft nosepiece
Lens protection device	Shields the objective lens against splashes and particles Features high-quality, scratch-proof ZEISS anti-reflective coating
Contact guard	Sterilizable to reliably swing loupes up and down
Side shields for EyeMag Smart	Lateral protection against splashes and particles
Soft case	High-quality, shock-proof protection for your medical loupes and accessories

EyeMag Pro F



EyeMag Pro S



Standard delivery package of EyeMag Pro F and EyeMag Pro S

Optics	Featuring a Kepler design
EyeMag Pro F Carrier	Titanium eyeglass frame Sizes: S, M, L with elastic headband and soft nose bridge
EyeMag Pro S Carrier	Headband which can be adjusted to wearer's head
Lens protection device	Protects against splashes and particles with ZEISS anti-reflective coating
Contact guard	Sterilizable to reliably swing loupes up and down
Side shields for EyeMag Pro F	Lateral protection against splashes and particles
Soft case	High-quality, shock-proof protection for your medical loupes and accessories

EyeMag Light II*



Standard delivery package of EyeMag Light II

Bulb housing	Powerful LED light source with integrated temperature control
Control unit	With 3-step intensity control, charge level indicator and belt clip
Adapter for ZEISS loupes	To attach the EyeMag Light II LED illumination to EyeMag Smart, EyeMag Pro F and EyeMag Pro S
Cable clip	To connect the lamp cable to the carrier
Soft case	High-quality, shock-proof protection for your light source and accessories
Orange filter (for dental application)	Swing-in orange filter for EyeMag Light II prevents premature curing of composite materials
Light intensity	Up to 50,000 Lux (at distance of 300 mm)
Typical color temperature	Resembles daylight (approx. 5,700 Kelvin)
Weight of illumination head	19 g (0.6 oz)
2 batteries	2 medical grade lithium-ion smart batteries for fast charging
Battery charger	Processor controlled with country-specific power adapter
Operating time	Thanks to their short charge times the two battery packs enable continuous usage of the light during the entire workday

*A SCHOTT AG product

**A PROTECT-Laserschutz GmbH product





EyeMag medical loupes



EyeMag Light II



Strator Laser One laser protection



Carl Zeiss Meditec AG
Goeschwitzer Strasse 51–52
07745 Jena
Germany
www.zeiss.com
www.zeiss.com/med/contacts



SCHOTT AG
Lighting and Imaging
Hattenbergstrasse 10
55122 Mainz
Germany
www.schott.com/lightingandimaging



PROTECT-Laserschutz GmbH
Mühlhofer Hauptstraße 7
90453 Nuremberg
Germany
www.protect-laserschutz.de